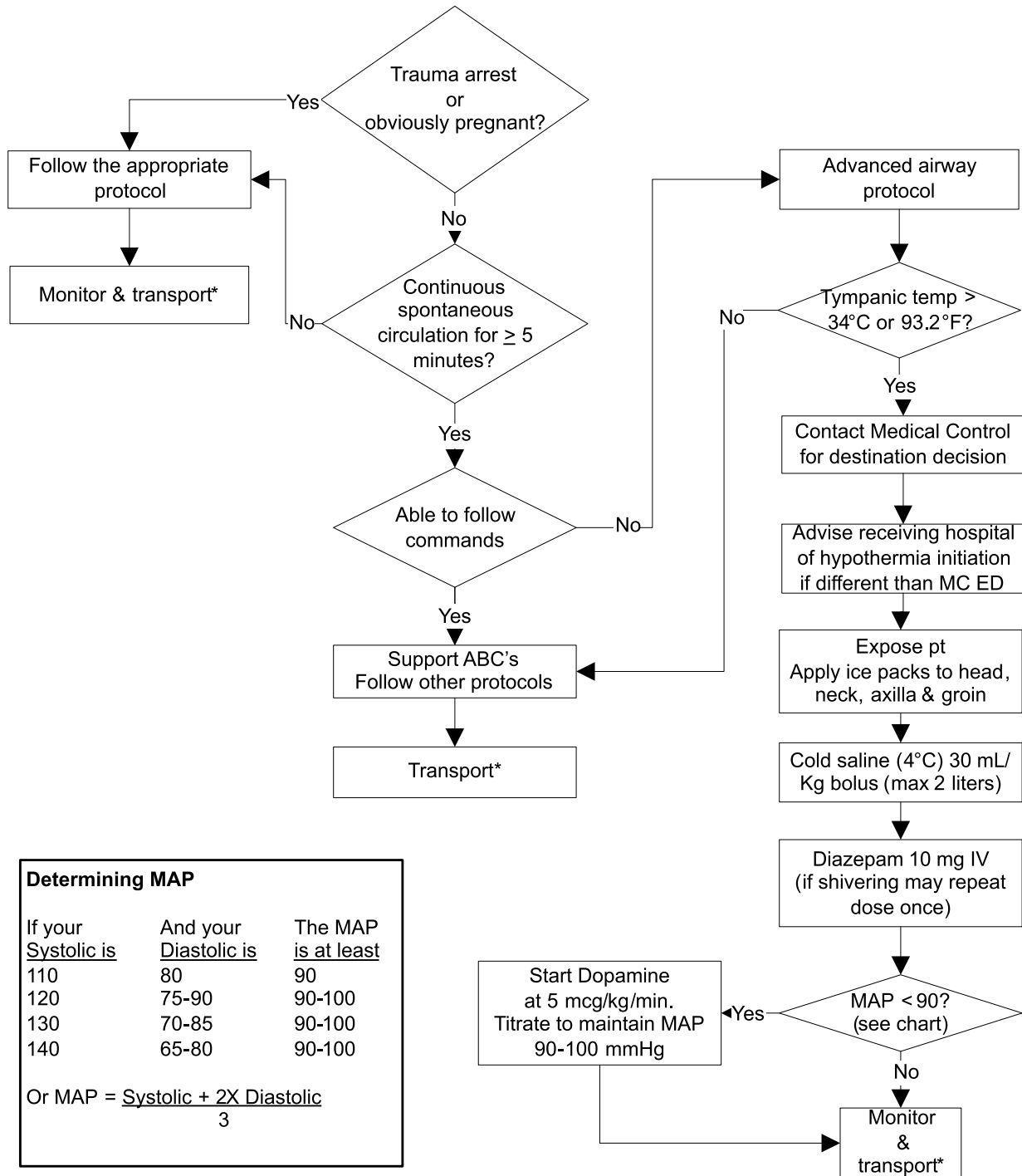


## POST CARDIAC ARREST PROTOCOL (Final 12/3/08)



Determining MAP		
If your Systolic is	And your Diastolic is	The MAP is at least
110	80	90
120	75-90	90-100
130	70-85	90-100
140	65-80	90-100

Or MAP =  $\frac{\text{Systolic} + 2 \times \text{Diastolic}}{3}$